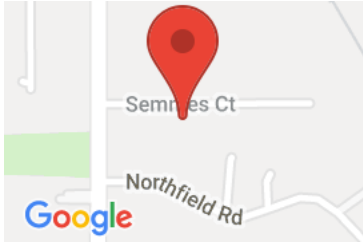


9141 Semmes Ct

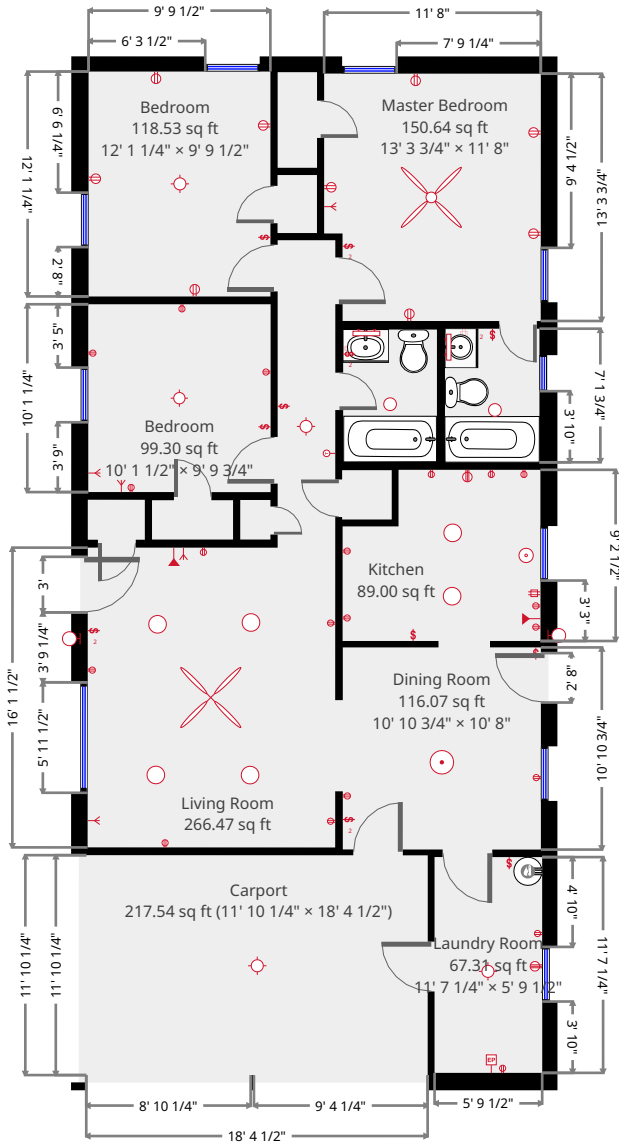
9141 Semmes Ct, Semmes, AL, United States 36575



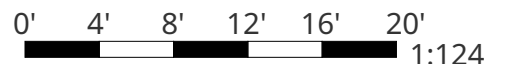
Statistics

Area: 1218 sq ft
1 Floor
3 Bedrooms
2 Bathroom

Ground Floor



THIS FLOORPLAN IS PROVIDED WITHOUT WARRANTY OF ANY KIND. PRIME DESIGN HOMES DISCLAIMS ANY WARRANTY INCLUDING, WITHOUT LIMITATION, SATISFACTORY QUALITY OR ACCURACY OF DIMENSIONS.

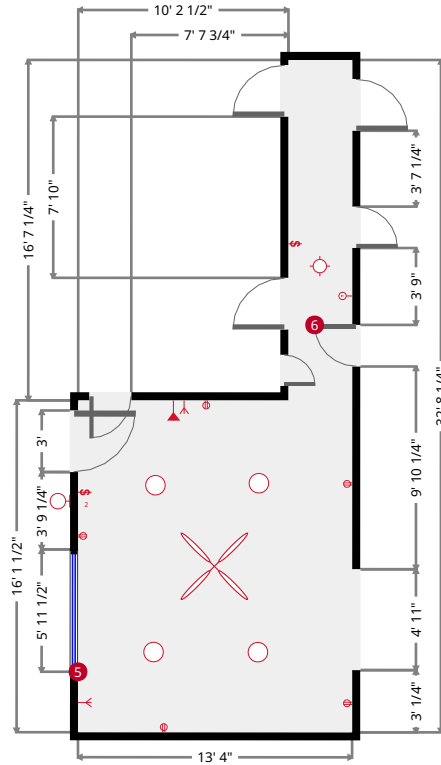
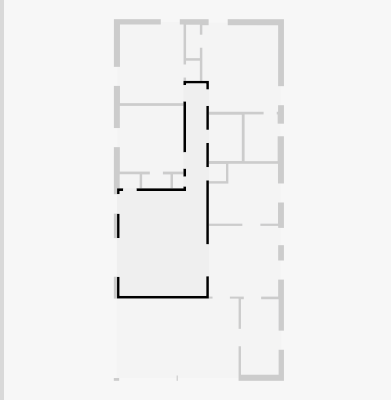


9141 Semmes Ct - Revised

9141 Semmes Ct, Semmes, AL, United States 36575

Living Room

Width: 13' 4"
 Length: 32' 8 1/4"
 Area: 266.47 sq ft
 Perimeter: 92' 1/2"



5

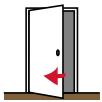


Hung Window

- Height: 4' 2 1/2"

- Distance to Floor: 2' 7 1/4"

6



Hinged Door

- Height: 5' 1/4"

- Distance to Floor: 1' 8"

THIS FLOORPLAN IS PROVIDED WITHOUT WARRANTY OF ANY KIND. PRIME DESIGN HOMES DISCLAIMS ANY WARRANTY INCLUDING, WITHOUT LIMITATION, SATISFACTORY QUALITY OR ACCURACY OF DIMENSIONS.

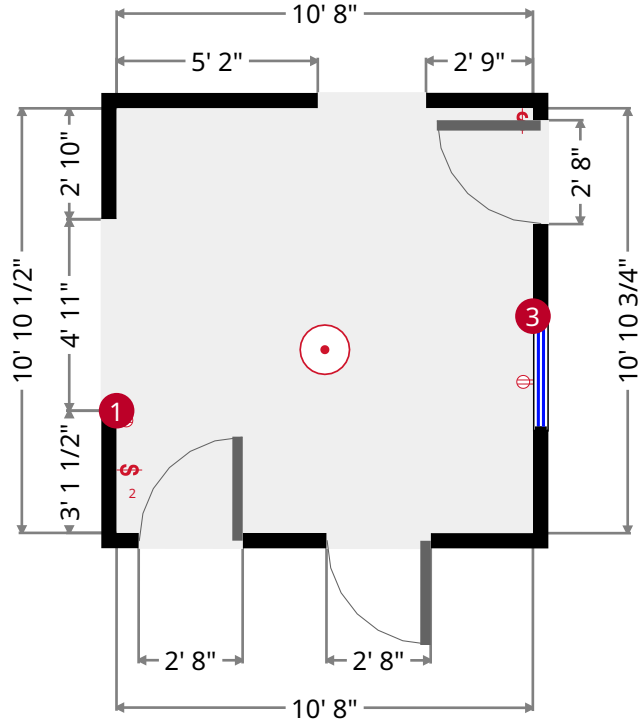


9141 Semmes Ct - Revised

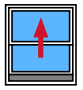
9141 Semmes Ct, Semmes, AL, United States 36575

Dining Room

Width: 10' 8"
 Length: 10' 10 3/4"
 Area: 116.07 sq ft
 Perimeter: 43' 1 1/4"



1  Opening - Height: 6' 8 1/4"

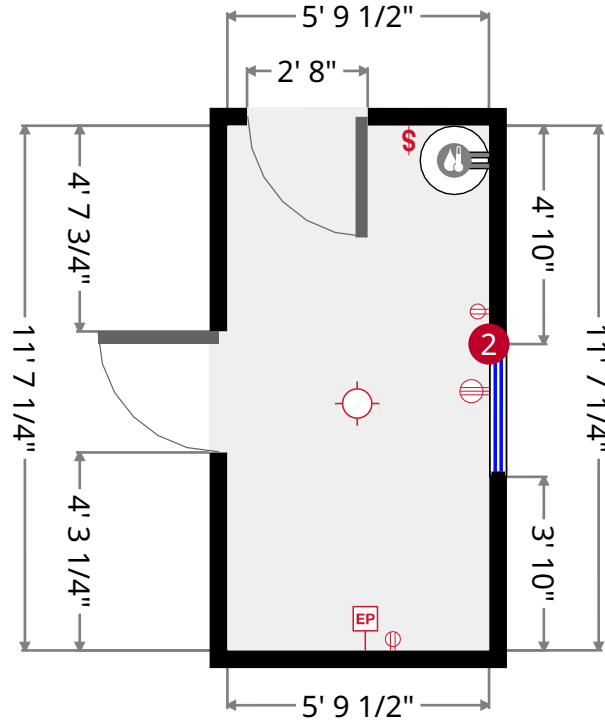
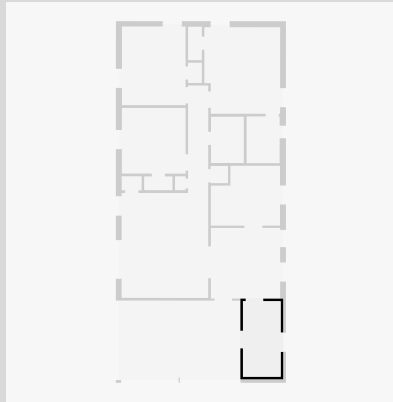
3  Hung Window - Height: 4' 2 3/4"
 - Distance to Floor: 2' 7 1/4"

9141 Semmes Ct - Revised

9141 Semmes Ct, Semmes, AL, United States 36575

Laundry Room

Width: 5' 9 1/2"
 Length: 11' 7 1/4"
 Area: 67.31 sq ft
 Perimeter: 34' 10"



2



Hung Window

- Height: 2' 11 1/4"

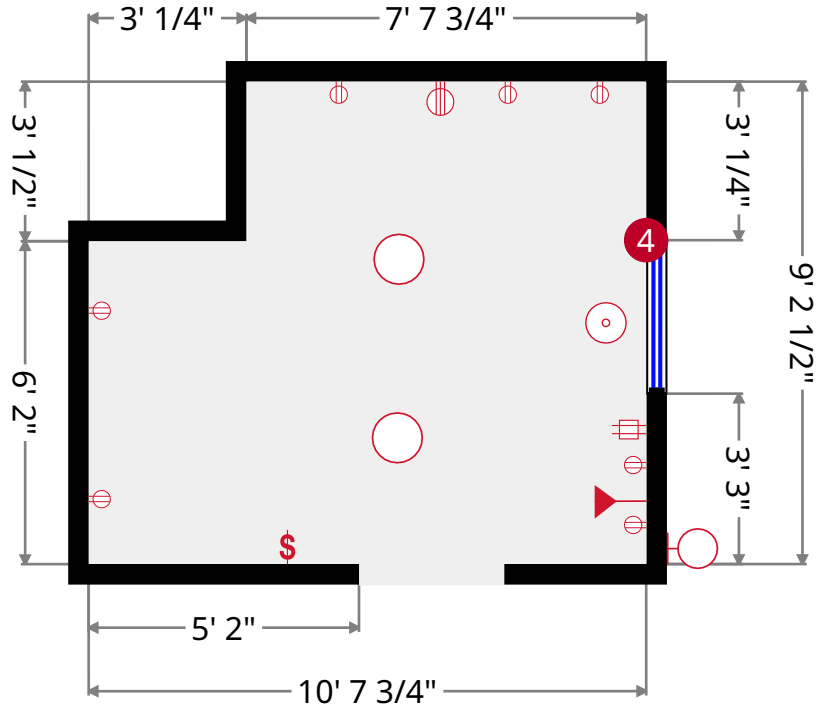
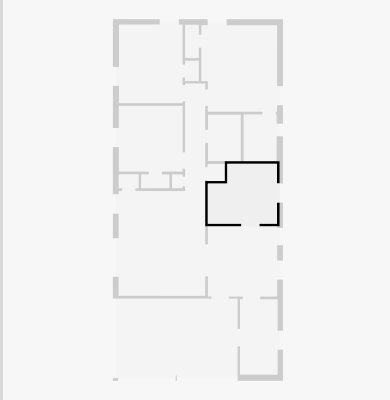
- Distance to Floor: 3' 11 1/2"

9141 Semmes Ct - Revised

9141 Semmes Ct, Semmes, AL, United States 36575

Kitchen

Width: 9' 2 1/2"
 Length: 10' 7 3/4"
 Area: 89.00 sq ft
 Perimeter: 39' 9"



4



Hung Window

- Height: 2' 11 1/4"

- Distance to Floor: 3' 10 3/4"

THIS FLOORPLAN IS PROVIDED WITHOUT WARRANTY OF ANY KIND. PRIME DESIGN HOMES DISCLAIMS ANY WARRANTY INCLUDING, WITHOUT LIMITATION, SATISFACTORY QUALITY OR ACCURACY OF DIMENSIONS.

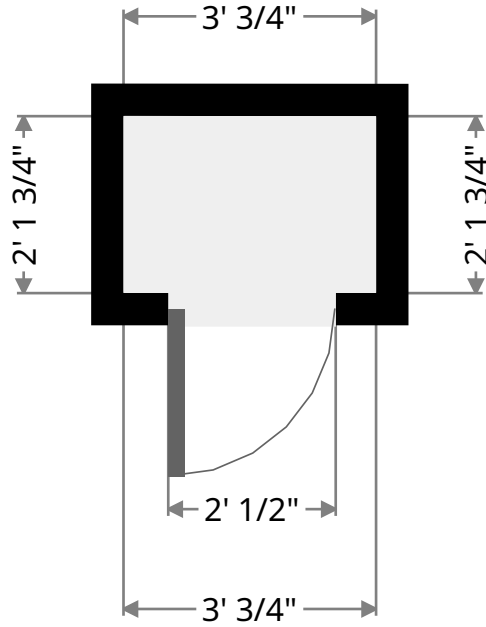


9141 Semmes Ct - Revised

9141 Semmes Ct, Semmes, AL, United States 36575

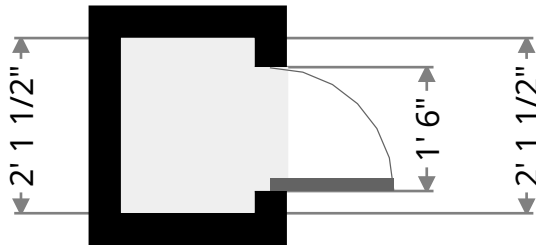
Closet

Width: 2' 1 3/4"
Length: 3' 3/4"
Area: 6.61 sq ft
Perimeter: 10' 5 1/4"



Closet

Width: 1' 7 1/2"
Length: 2' 1 1/2"
Area: 3.46 sq ft
Perimeter: 7' 6"



THIS FLOORPLAN IS PROVIDED WITHOUT WARRANTY OF ANY KIND. PRIME DESIGN HOMES DISCLAIMS ANY WARRANTY INCLUDING, WITHOUT LIMITATION, SATISFACTORY QUALITY OR ACCURACY OF DIMENSIONS.

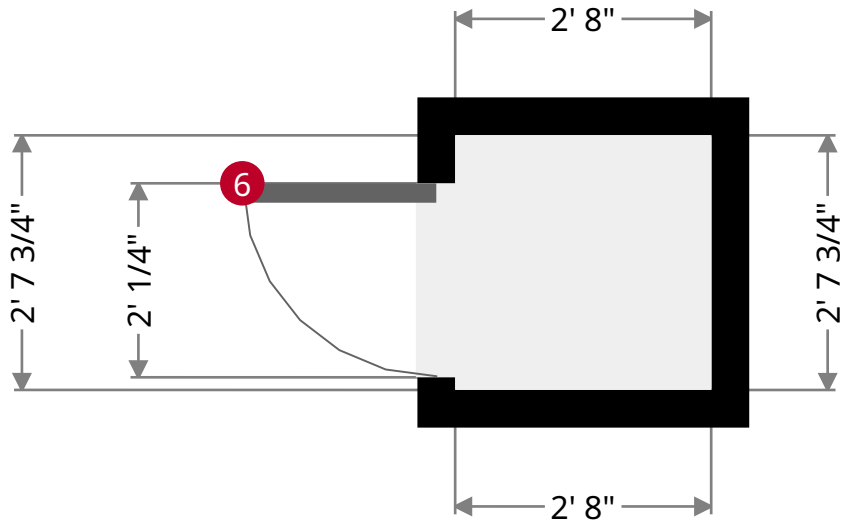


9141 Semmes Ct - Revised

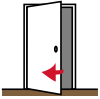
9141 Semmes Ct, Semmes, AL, United States 36575

Furnace Room

Width: 2' 7 3/4"
Length: 2' 8"
Area: 7.08 sq ft
Perimeter: 10' 7 3/4"



6



Hinged Door

- Height: 5' 1/4"

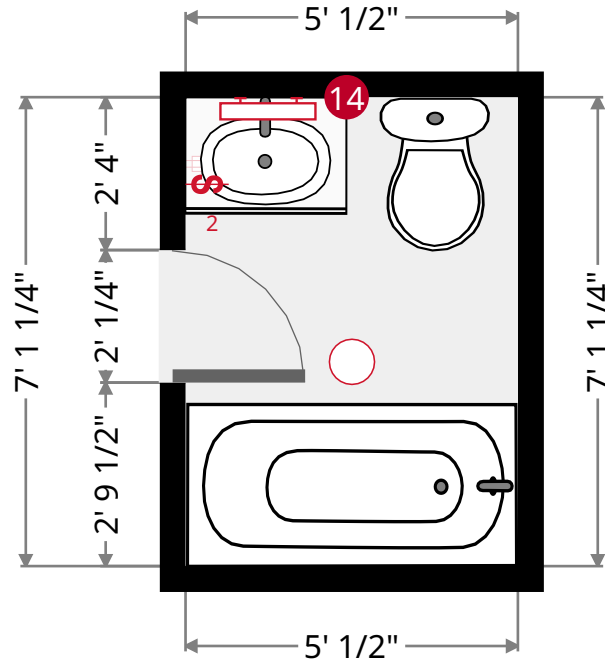
- Distance to Floor: 1' 8"

9141 Semmes Ct - Revised

9141 Semmes Ct, Semmes, AL, United States 36575

Bathroom

Width: 5' 1/2"
 Length: 7' 1 1/4"
 Area: 35.99 sq ft
 Perimeter: 24' 4 1/4"



14



Vanity Cabinet

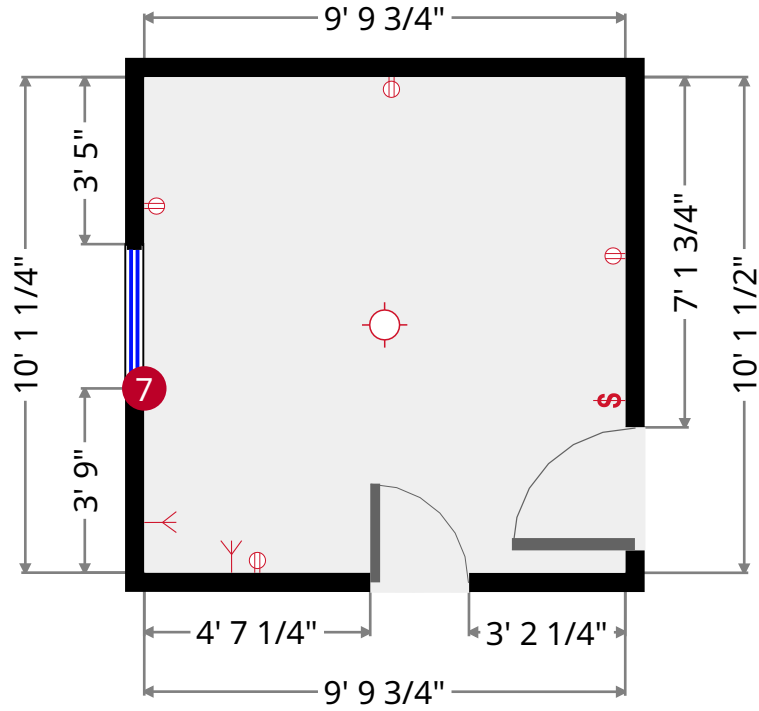
- Height: 2' 8 1/2"

9141 Semmes Ct - Revised

9141 Semmes Ct, Semmes, AL, United States 36575

Bedroom

Width: 9' 9 3/4"
 Length: 10' 1 1/2"
 Area: 99.30 sq ft
 Perimeter: 39' 10 1/2"



7



Hung Window

- Height: 4' 3 1/4"

- Distance to Floor: 2' 7 1/2"

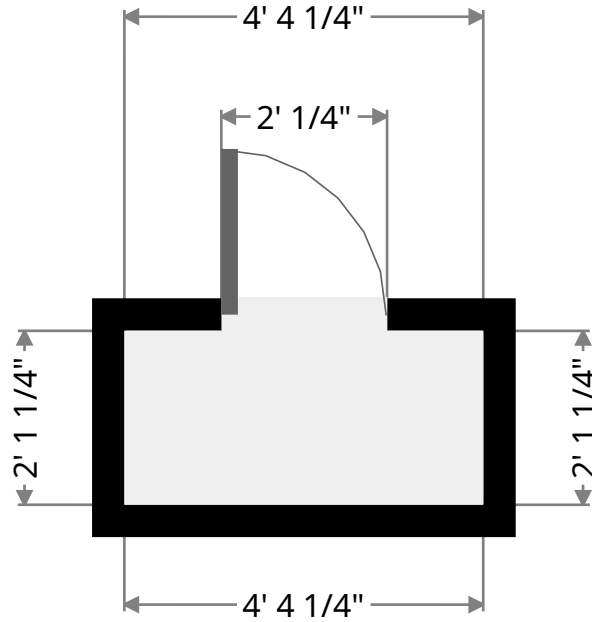
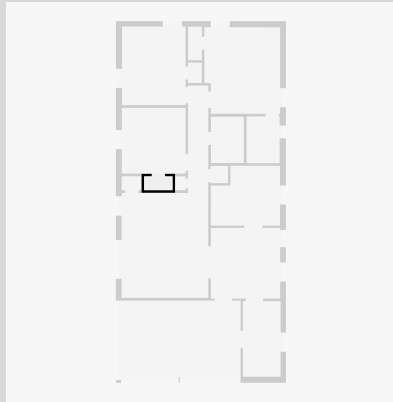


9141 Semmes Ct - Revised

9141 Semmes Ct, Semmes, AL, United States 36575

Closet

Width: 2' 1 1/4"
Length: 4' 4 1/4"
Area: 9.23 sq ft
Perimeter: 12' 11 1/2"



THIS FLOORPLAN IS PROVIDED WITHOUT WARRANTY OF ANY KIND. PRIME DESIGN HOMES DISCLAIMS ANY WARRANTY INCLUDING, WITHOUT LIMITATION, SATISFACTORY QUALITY OR ACCURACY OF DIMENSIONS.

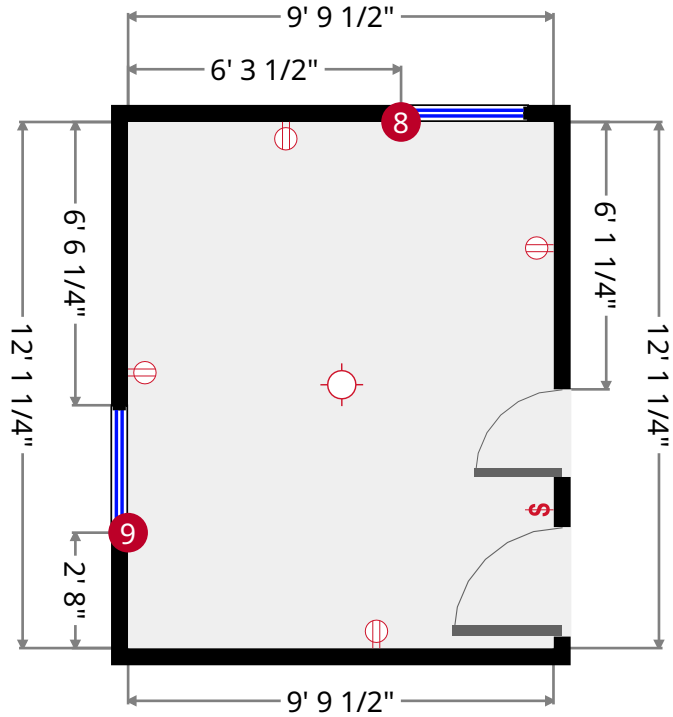
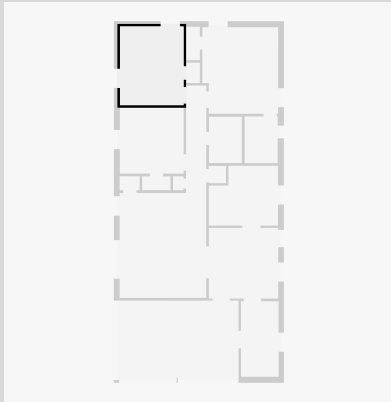


9141 Semmes Ct - Revised

9141 Semmes Ct, Semmes, AL, United States 36575

Bedroom

Width: 9' 9 1/2"
 Length: 12' 1 1/4"
 Area: 118.53 sq ft
 Perimeter: 43' 9 1/2"



8



Hung Window

- Height: 2' 11"

- Distance to Floor: 3' 10 3/4"

9



Hung Window

- Height: 4' 3"

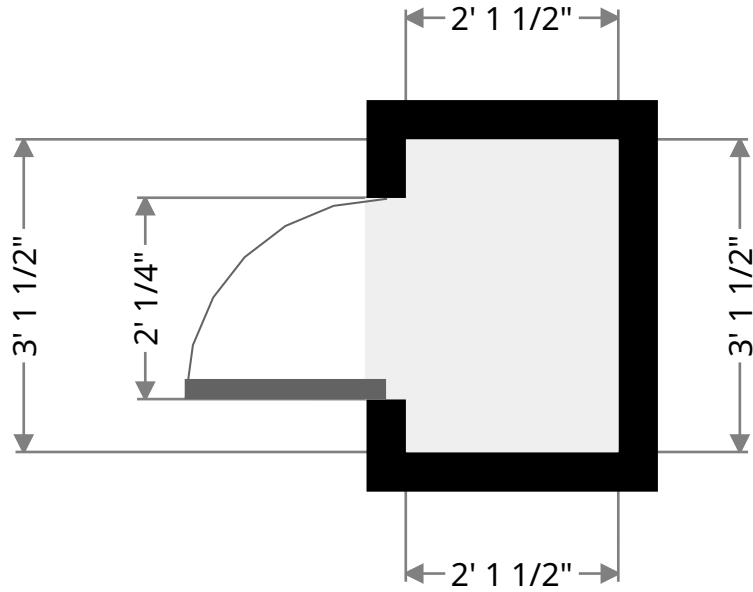
- Distance to Floor: 2' 6 1/2"

9141 Semmes Ct - Revised

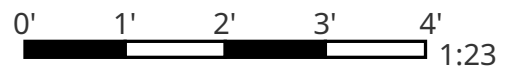
9141 Semmes Ct, Semmes, AL, United States 36575

Closet

Width: 2' 1 1/2"
Length: 3' 1 1/2"
Area: 6.63 sq ft
Perimeter: 10' 6"



THIS FLOORPLAN IS PROVIDED WITHOUT WARRANTY OF ANY KIND. PRIME DESIGN HOMES DISCLAIMS ANY WARRANTY INCLUDING, WITHOUT LIMITATION, SATISFACTORY QUALITY OR ACCURACY OF DIMENSIONS.

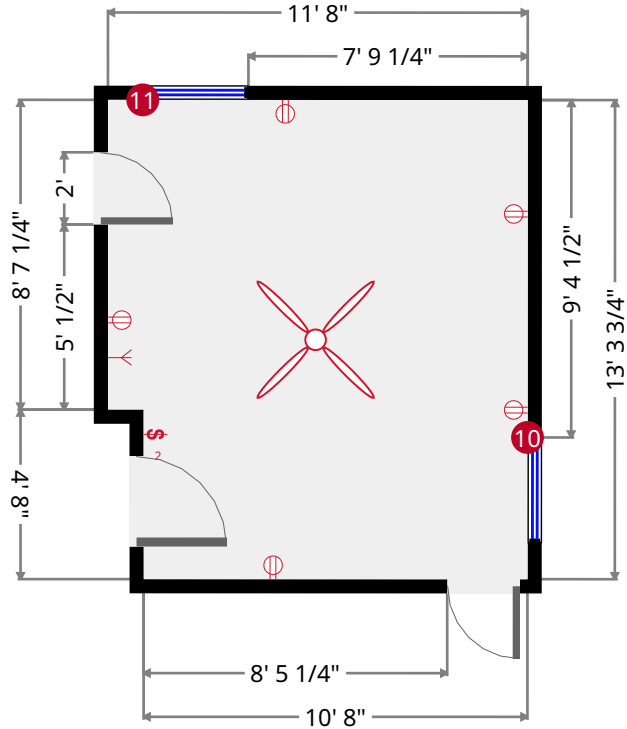
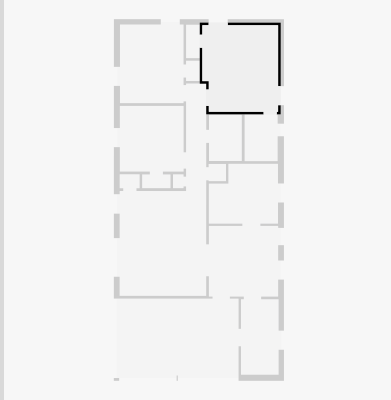


9141 Semmes Ct - Revised

9141 Semmes Ct, Semmes, AL, United States 36575

Master Bedroom

Width: 11' 8"
 Length: 13' 3 3/4"
 Area: 150.64 sq ft
 Perimeter: 49' 11 1/2"



10



Hung Window

- Height: 2' 11"

- Distance to Floor: 3' 10 1/2"

11



Hung Window

- Height: 2' 11 1/4"

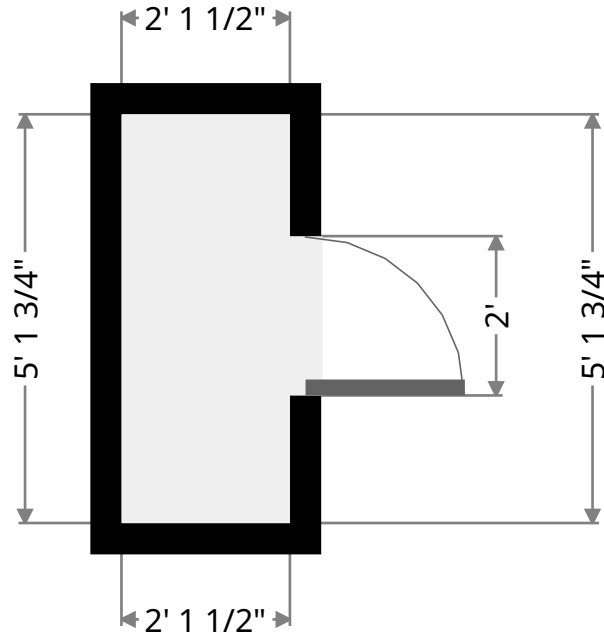
- Distance to Floor: 3' 10 3/4"

9141 Semmes Ct - Revised

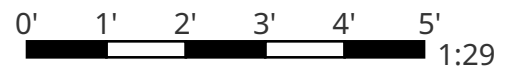
9141 Semmes Ct, Semmes, AL, United States 36575

Closet

Width: 2' 1 1/2"
Length: 5' 1 3/4"
Area: 10.92 sq ft
Perimeter: 14' 6 1/2"



THIS FLOORPLAN IS PROVIDED WITHOUT WARRANTY OF ANY KIND. PRIME DESIGN HOMES DISCLAIMS ANY WARRANTY INCLUDING, WITHOUT LIMITATION, SATISFACTORY QUALITY OR ACCURACY OF DIMENSIONS.

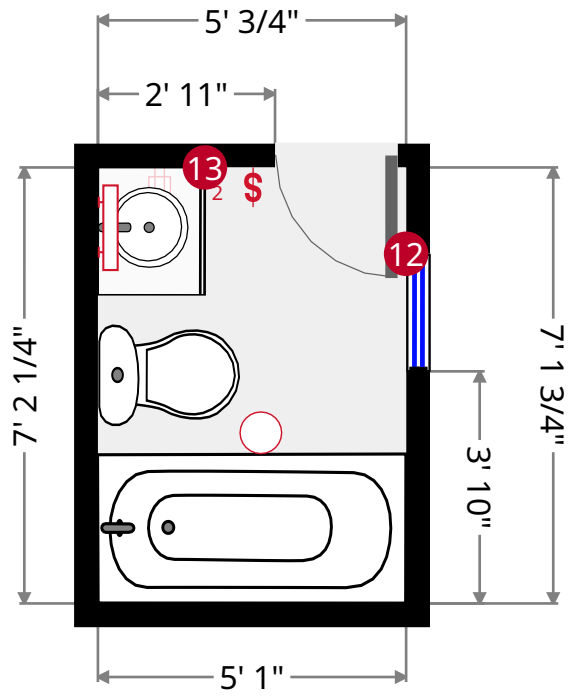
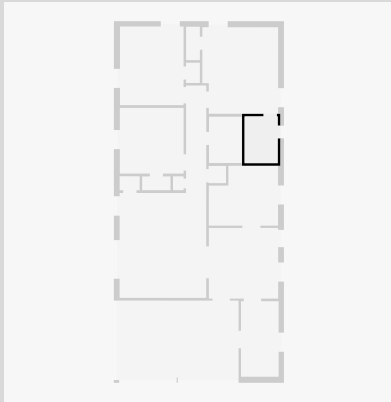


9141 Semmes Ct - Revised

9141 Semmes Ct, Semmes, AL, United States 36575

Master Bathroom

Width: 5' 1"
 Length: 7' 2 1/4"
 Area: 36.58 sq ft
 Perimeter: 24' 6 3/4"



12



Hung Window

- Height: 2' 11 1/4"

- Distance to Floor: 3' 11 1/4"

13



Vanity Cabinet

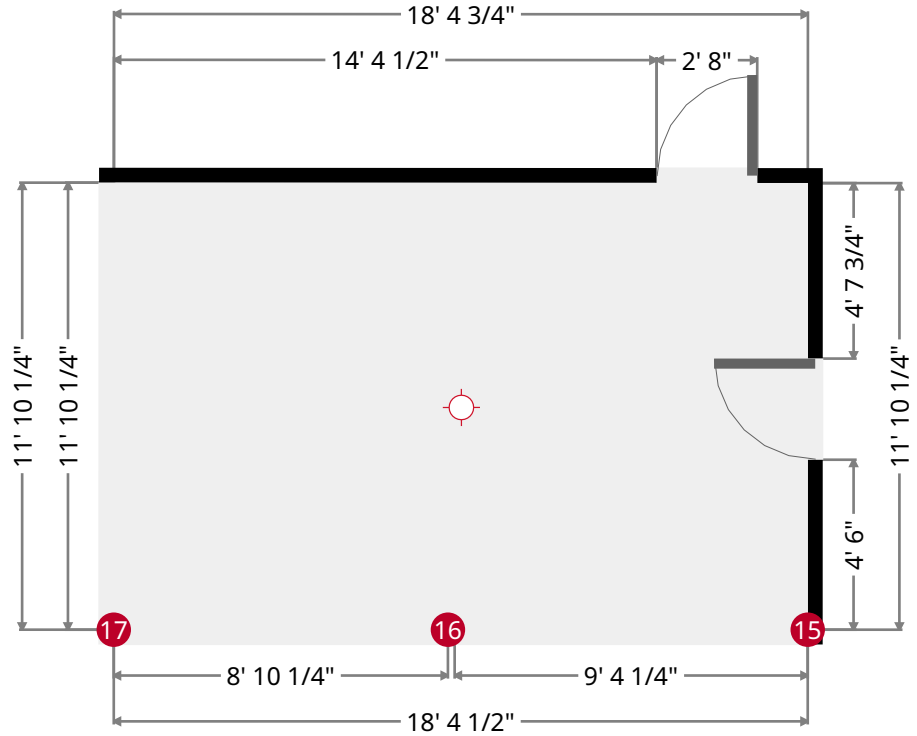
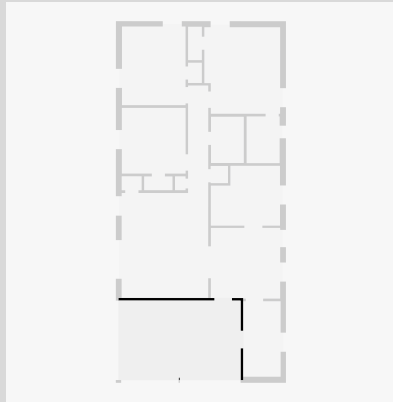
- Height: 2' 6 1/2"

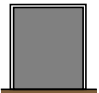
9141 Semmes Ct - Revised

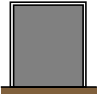
9141 Semmes Ct, Semmes, AL, United States 36575

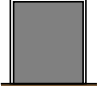
Carport

Width: 11' 10 1/4"
 Length: 18' 4 1/2"
 Area: 217.54 sq ft
 Perimeter: 60' 5 1/4"



- 
Opening
- Height: 7' 2 3/4"

- 
Opening
- Height: 7' 3 1/2"

- 
Opening
- Height: 7' 3 1/4"

THIS FLOORPLAN IS PROVIDED WITHOUT WARRANTY OF ANY KIND. PRIME DESIGN HOMES DISCLAIMS ANY WARRANTY INCLUDING, WITHOUT LIMITATION, SATISFACTORY QUALITY OR ACCURACY OF DIMENSIONS.

